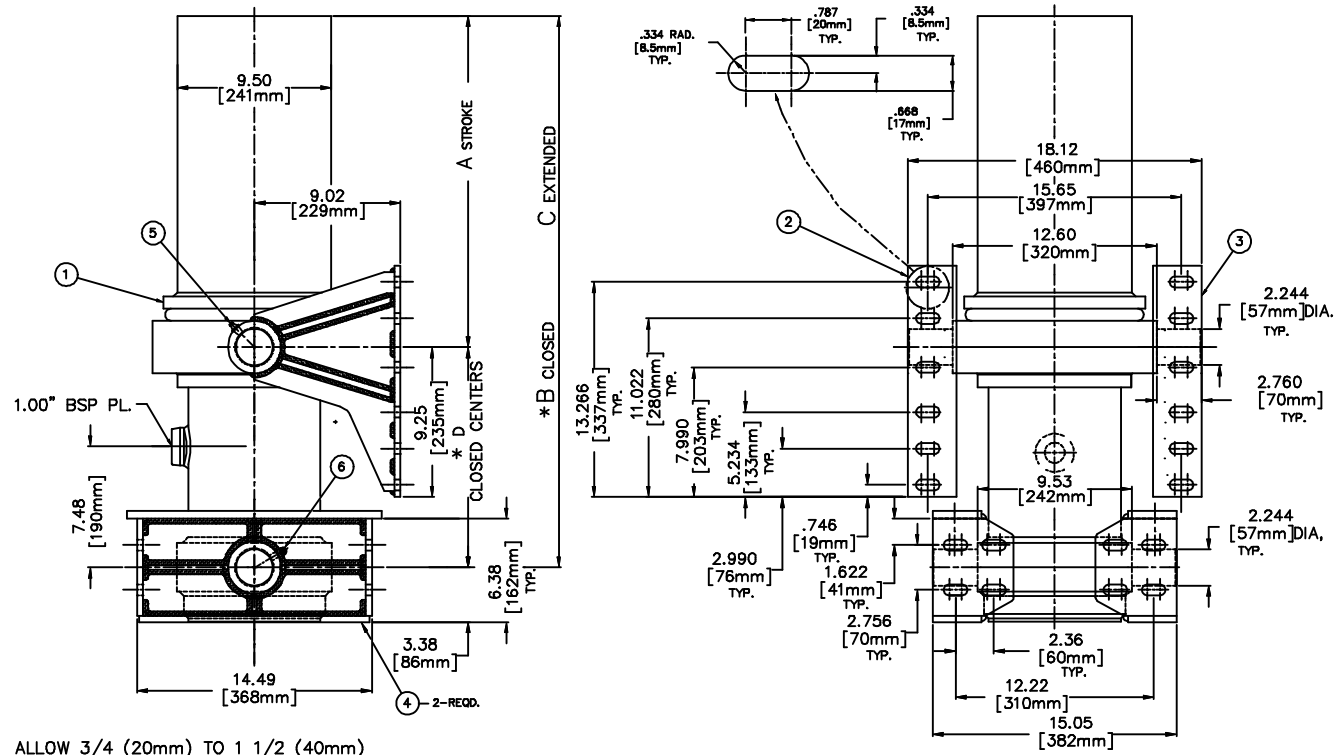


DWG. NO.	A	B	C	D	ITEM #1 CYLINDER ASSEMBLY	ITEM #2 R.H. MOUNTING BRACKET ASS'Y	ITEM #3 L.H. MOUNTING BRACKET ASS'Y	ITEM #4 MOUNTING BLOCK ASS'Y
1855-1502-5733A	225.62 5731	55.88 1419	281.50 7150	12.62 320	1855-1502-5731	2MBA-1	2MBA-2	2MBA-3 (2-REQ'D.)
1855-1502-6233A	245.00 6223	59.75 1518	304.75 7741	12.62 320	1855-1502-6233	2MBA-1	2MBA-2	2MBA-3 (2-REQ'D.)
1855-1502-7233A	284.38 7223	67.62 1718	352.00 8941	12.62 320	1855-1502-7233	2MBA-1	2MBA-2	2MBA-3 (2-REQ'D.)
1855-1502-5390A	212.50 5398	53.25 1353	265.75 6751	12.62 320	1855-1502-5390	2MBA-1	2MBA-2	2MBA-3 (2-REQ'D.)
1855-1502-7190A	283.12 7191	67.38 1711	350.50 8902	12.62 320	1855-1502-7190	2MBA-1	2MBA-2	2MBA-3 (2-REQ'D.)
1855-1502-6733A	265.00 6731	63.75 1619	328.75 8350	12.62 320	1855-1502-6733	2MBA-1	2MBA-2	2MBA-3 (2-REQ'D.)
1855-1502-9000A	354.38 9001	82.62 2099	437.00 11100	18.25 463	1855-1502-9000	2MBA-1	2MBA-2	2MBA-3 (2-REQ'D.)

5	1-GF-1-1	GREASE FITTING	2
6	1-GF-1-3	GREASE FITTING	2
7			



\* NOTE: ALLOW 3/4 (20mm) TO 1 1/2 (40mm) PULLOUT

THIS DRAWING IS THE CONFIDENTIAL PROPERTY OF CUSTOM HOISTS, INC. AND CAN NOT BE REPRODUCED, USED, OR MADE KNOWN, DIRECTLY OR INDIRECTLY, BY ANY PARTY IN ANY MANNER WHATSOEVER, IN WHOLE OR IN PART, WITHOUT THE PRIOR WRITTEN CONSENT OF CUSTOM HOISTS, INC.; ANY ACTION BY ANY PARTY CONTRARY THERETO IS SUBJECT TO THE MAXIMUM PENALTY UNDER LAW.

SYMBOL	REVISION	DATE	BY
A	ADDED	3-9-05	DC

TITLE: SINGLE ACTING TELESCOPIC CYLINDER

CUSTOM HOISTS INC.  
P.O. BOX 98  
HAYESVILLE, OHIO 44836

DR.: DC MAX. OPERATING PRESSURE 3500PSI 240 BAR DWG. NO.: 1855-1502-A

DATE: 3-8-05 STATIC TEST PRESSURE 3500PSI REV. NO.:

SAME WITH 1.25" BSP PORT 1855-1501